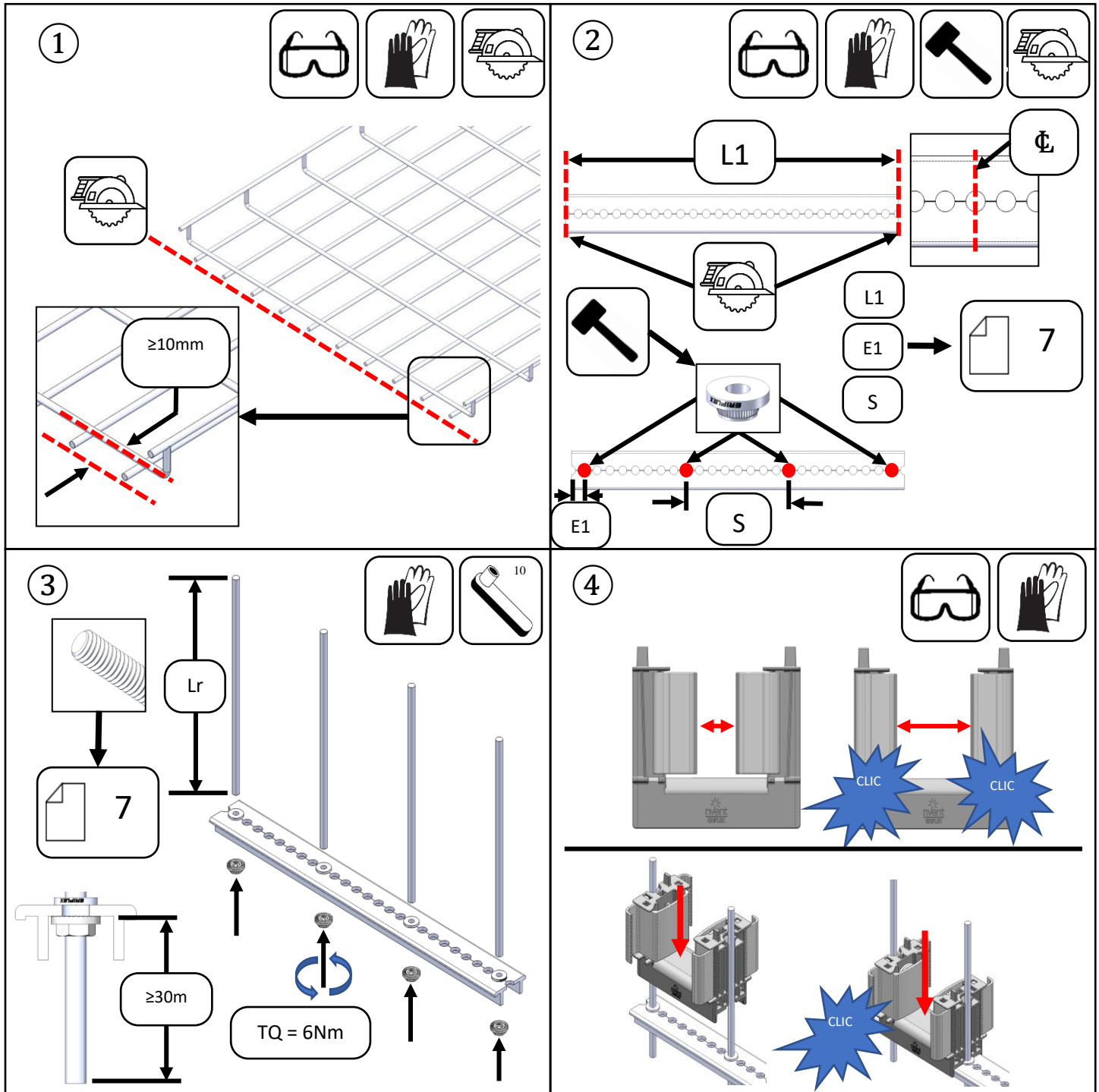


INSTRUCTION SHEET
NVENT ERIFLEX FLEXBUS SUPPORTS AND BRACING SYSTEM
 FLEXCOND50 / FLEXCOND100



WARNING:

1. nVent products shall be installed and used only as indicated in nVent product instruction sheets and training materials. Instruction sheets are available at www.nVent.com and from your nVent customer service representative.
2. nVent products must never be used for a purpose other than the purpose for which they were designed or in a manner that exceeds specified load ratings.
3. All instructions must be completely followed to ensure proper and safe installation and performance.
4. Improper installation, misuse, misapplication or other failure to completely follow nVent's instructions and warnings may cause product malfunction, property damage, serious bodily injury and/or death, and void your warranty.

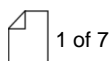
SAFETY INSTRUCTIONS: All governing codes and regulations and those required by the job site must be observed. Always use appropriate safety equipment such as eye protection, hard hat, and gloves as appropriate to the application.

nVent, nVent CADDY, nVent ERICO Cadweld, nVent ERICO Critec, nVent ERICO, nVent ERIFLEX, and nVent LENTON are owned by nVent or its global affiliates. All other trademarks are the property of their respective owners. nVent reserves the right to change specifications without prior notice.



TECHNICAL SUPPORT:
www.nVent.com

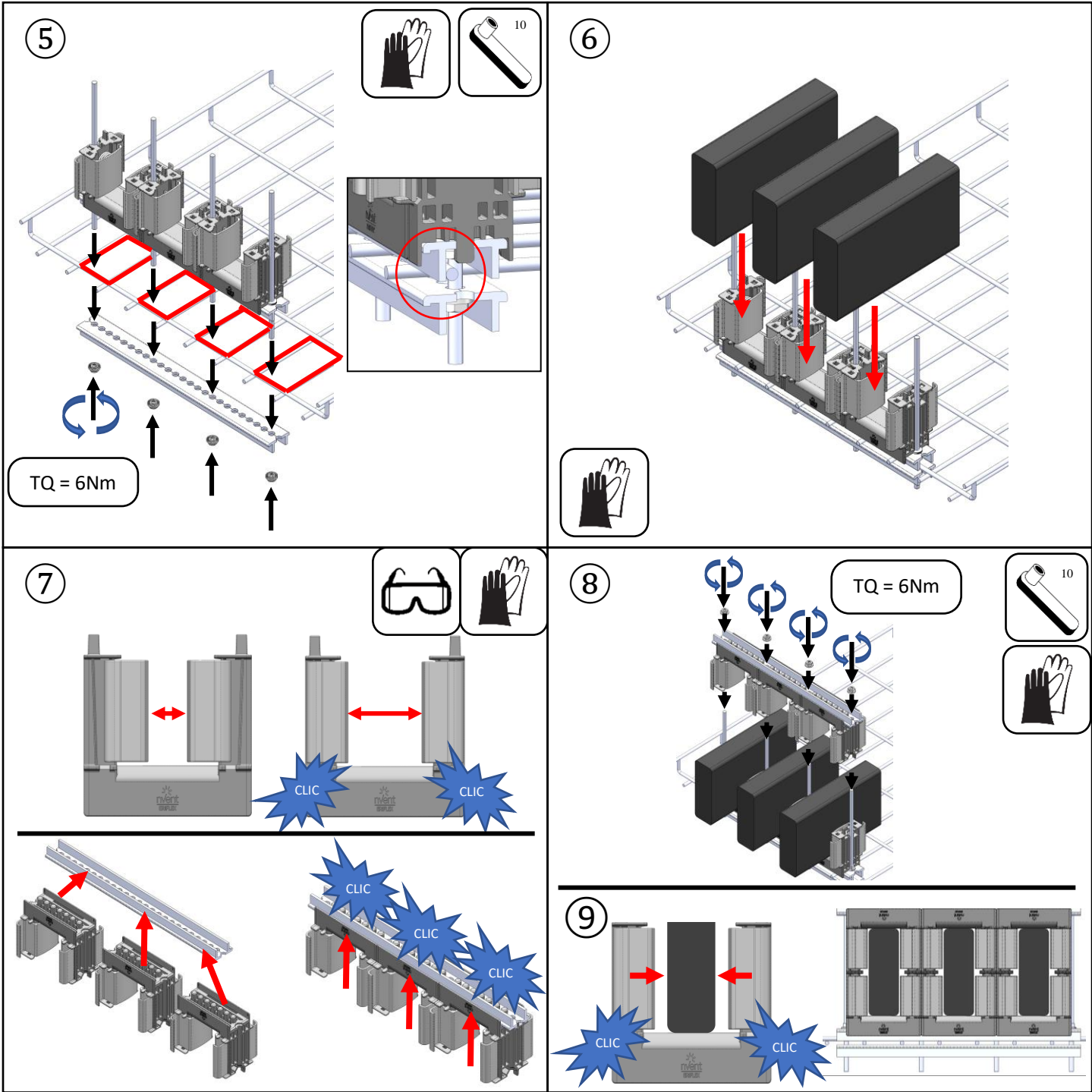
IP8610_C



©2021-2022 nVent All Rights Reserved



FLEXCOND50 / FLEXCOND100



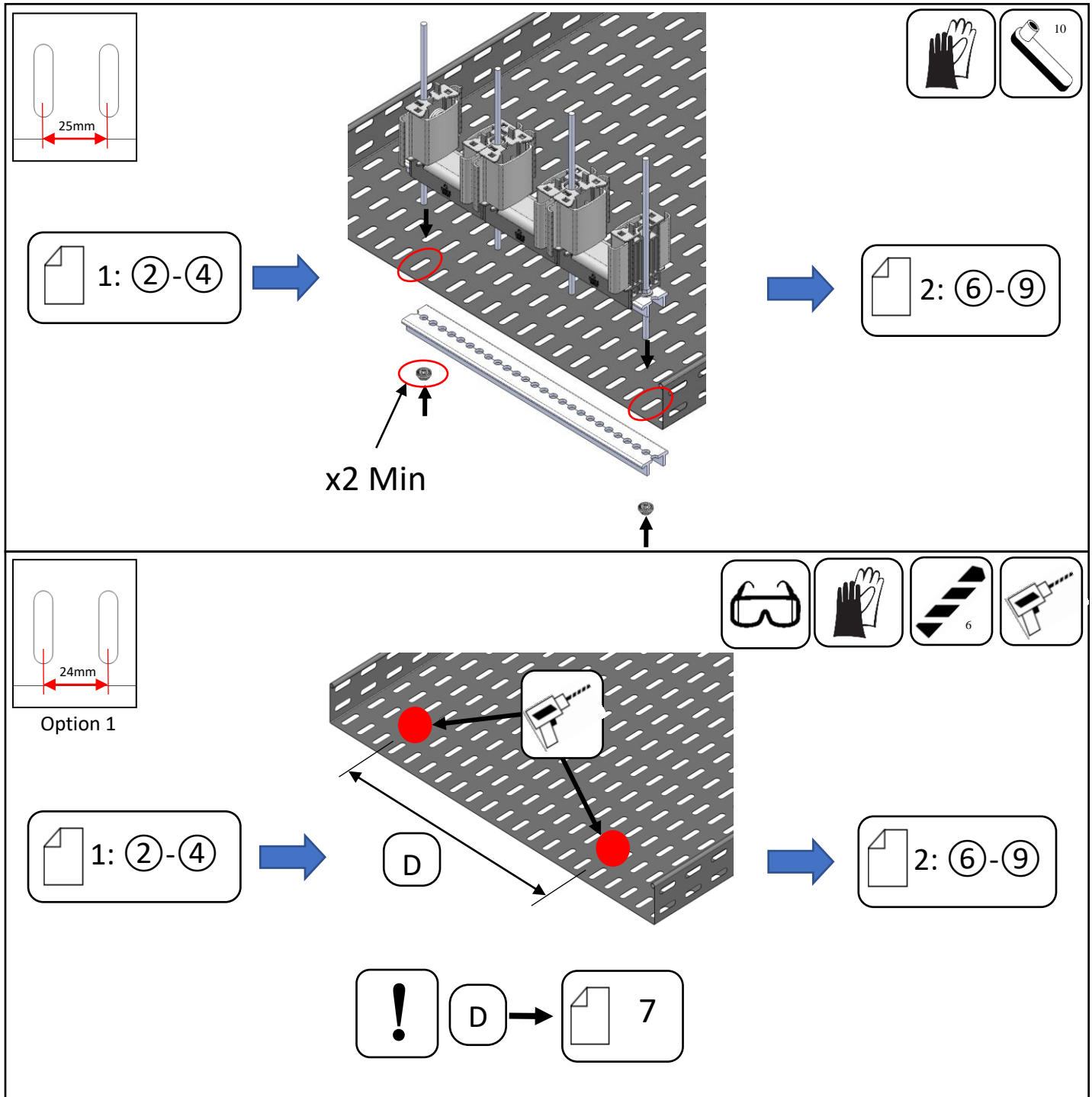
WARNING:

1. nVent products shall be installed and used only as indicated in nVent product instruction sheets and training materials. Instruction sheets are available at www.nVent.com and from your nVent customer service representative.
2. nVent products must never be used for a purpose other than the purpose for which they were designed or in a manner that exceeds specified load ratings.
3. All instructions must be completely followed to ensure proper and safe installation and performance.
4. Improper installation, misuse, misapplication or other failure to completely follow nVent's instructions and warnings may cause product malfunction, property damage, serious bodily injury and/or death, and void your warranty.

SAFETY INSTRUCTIONS: All governing codes and regulations and those required by the job site must be observed. Always use appropriate safety equipment such as eye protection, hard hat, and gloves as appropriate to the application.

nVent, nVent CADDY, nVent ERICO Cadweld, nVent ERICO Critec, nVent ERICO, nVent ERIFLEX, and nVent LENTON are owned by nVent or its global affiliates. All other trademarks are the property of their respective owners. nVent reserves the right to change specifications without prior notice.

INSTRUCTION SHEET
NVENT ERIFLEX FLEXBUS SUPPORTS AND BRACING SYSTEM
 FLEXCOND50 / FLEXCOND100



WARNING:

1. nVent products shall be installed and used only as indicated in nVent product instruction sheets and training materials. Instruction sheets are available at www.nVent.com and from your nVent customer service representative.
2. nVent products must never be used for a purpose other than the purpose for which they were designed or in a manner that exceeds specified load ratings.
3. All instructions must be completely followed to ensure proper and safe installation and performance.
4. Improper installation, misuse, misapplication or other failure to completely follow nVent's instructions and warnings may cause product malfunction, property damage, serious bodily injury and/or death, and void your warranty.

SAFETY INSTRUCTIONS: All governing codes and regulations and those required by the job site must be observed. Always use appropriate safety equipment such as eye protection, hard hat, and gloves as appropriate to the application.

nVent, nVent CADDY, nVent ERICO Cadweld, nVent ERICO Critec, nVent ERICO, nVent ERIFLEX, and nVent LENTON are owned by nVent or its global affiliates. All other trademarks are the property of their respective owners. nVent reserves the right to change specifications without prior notice.



TECHNICAL SUPPORT:
www.nVent.com

IP8610_C

3 of 7

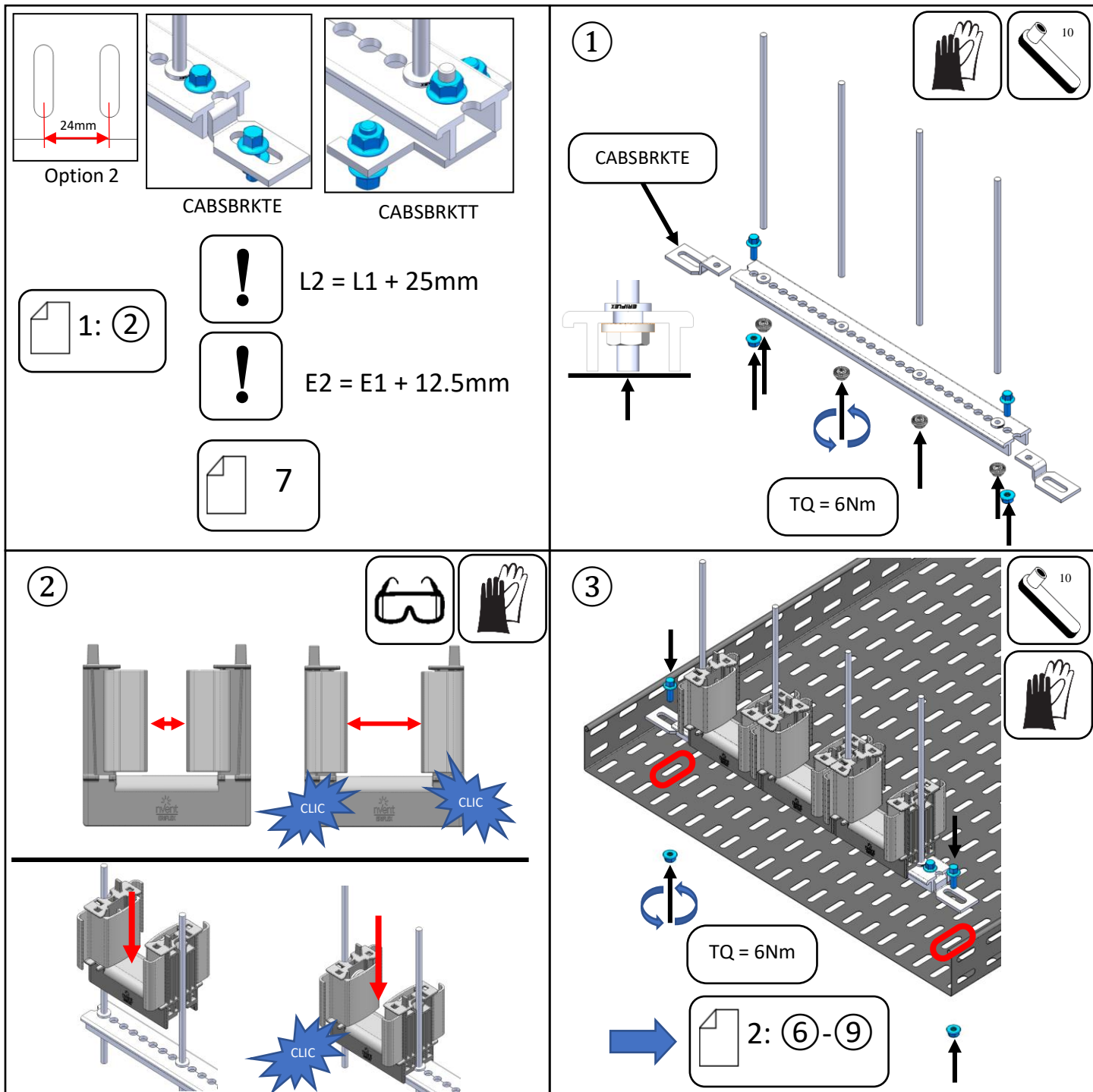
©2021-2022 nVent All Rights Reserved



INSTRUCTION SHEET

NVENT ERIFLEX FLEXBUS SUPPORTS AND BRACING SYSTEM

FLEXCOND50 / FLEXCOND100



WARNING:

1. nVent products shall be installed and used only as indicated in nVent product instruction sheets and training materials. Instruction sheets are available at www.nVent.com and from your nVent customer service representative.
2. nVent products must never be used for a purpose other than the purpose for which they were designed or in a manner that exceeds specified load ratings.
3. All instructions must be **completely** followed to ensure proper and safe installation and performance.
4. Improper installation, misuse, misapplication or other failure to completely follow nVent's instructions and warnings may cause product malfunction, property damage, serious bodily injury and/or death, and void your warranty.

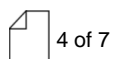
SAFETY INSTRUCTIONS: All governing codes and regulations and those required by the job site must be observed. Always use appropriate safety equipment such as eye protection, hard hat, and gloves as appropriate to the application.

nVent, nVent CADDY, nVent ERICO Cadweld, nVent ERICO Critec, nVent ERICO, nVent ERIFLEX, and nVent LENTON are owned by nVent or its global affiliates. All other trademarks are the property of their respective owners. nVent reserves the right to change specifications without prior notice.



TECHNICAL SUPPORT:
www.nVent.com

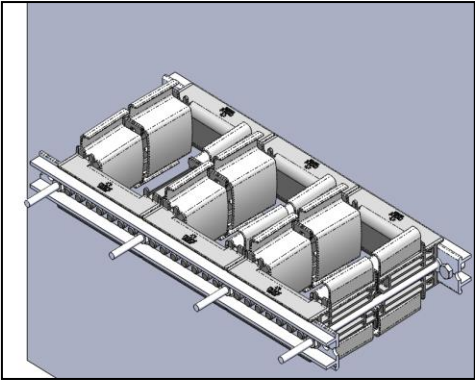
IP8610_C




©2021-2022 nVent All Rights Reserved




INSTRUCTION SHEET
NVENT ERIFLEX FLEXBUS SUPPORTS AND BRACING SYSTEM
 FLEXCOND50 / FLEXCOND100



1: ②

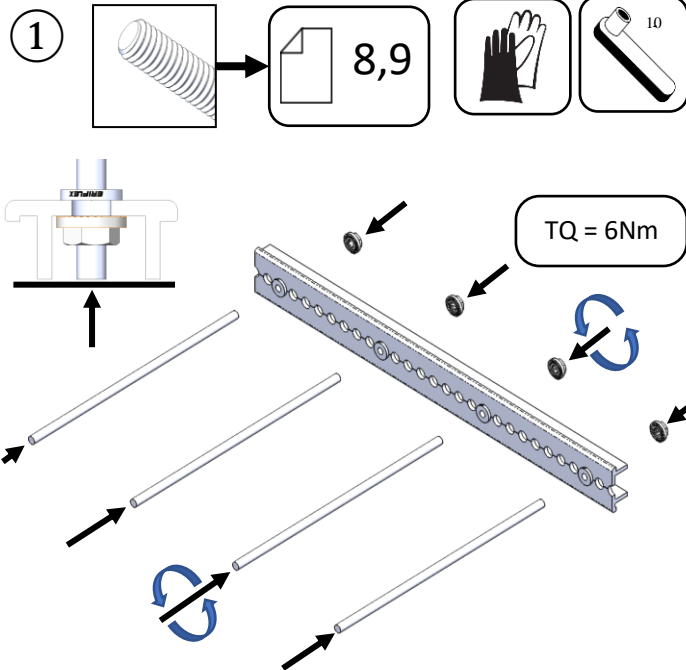


$L2 = L1 + 25\text{mm}$



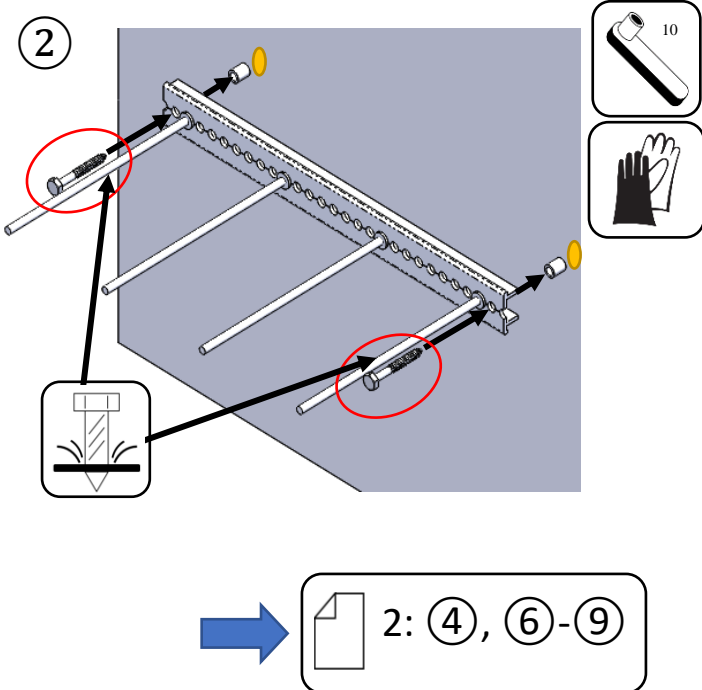
$E2 = E1 + 12.5\text{mm}$

①

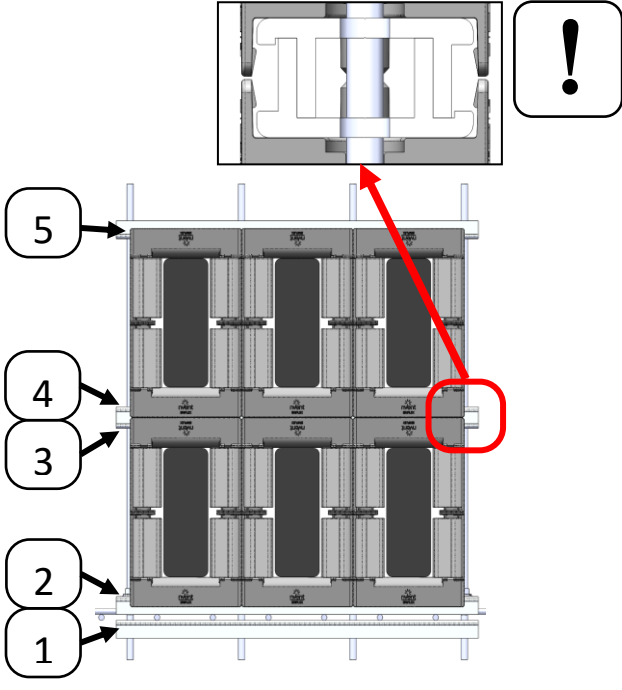


TQ = 6Nm

②



2: ④, ⑥-⑨



WARNING:

1. nVent products shall be installed and used only as indicated in nVent product instruction sheets and training materials. Instruction sheets are available at www.nVent.com and from your nVent customer service representative.
2. nVent products must never be used for a purpose other than the purpose for which they were designed or in a manner that exceeds specified load ratings.
3. All instructions must be completely followed to ensure proper and safe installation and performance.
4. Improper installation, misuse, misapplication or other failure to completely follow nVent's instructions and warnings may cause product malfunction, property damage, serious bodily injury and/or death, and void your warranty.

SAFETY INSTRUCTIONS: All governing codes and regulations and those required by the job site must be observed. Always use appropriate safety equipment such as eye protection, hard hat, and gloves as appropriate to the application.

nVent, nVent CADDY, nVent ERICO Cadweld, nVent ERICO Critec, nVent ERICO, nVent ERIFLEX, and nVent LENTON are owned by nVent or its global affiliates. All other trademarks are the property of their respective owners. nVent reserves the right to change specifications without prior notice.



TECHNICAL SUPPORT:
www.nVent.com

IP8610_C

5 of 7



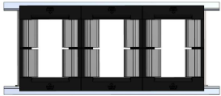
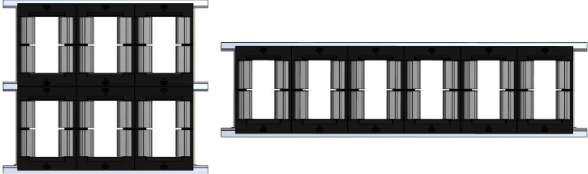
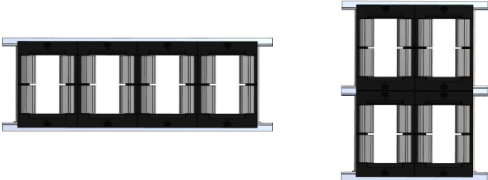
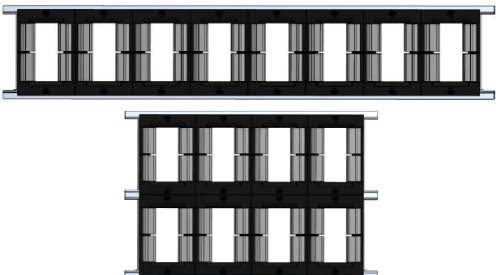
©2021-2022 nVent All Rights Reserved



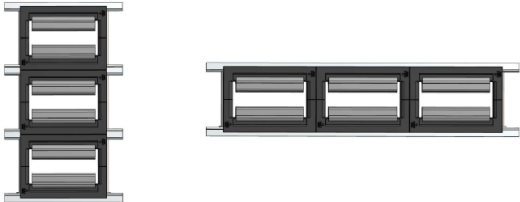
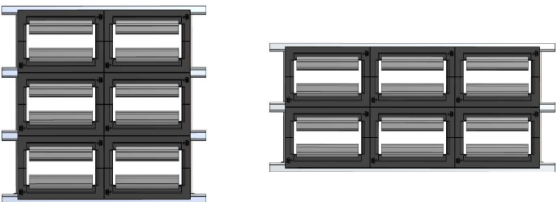
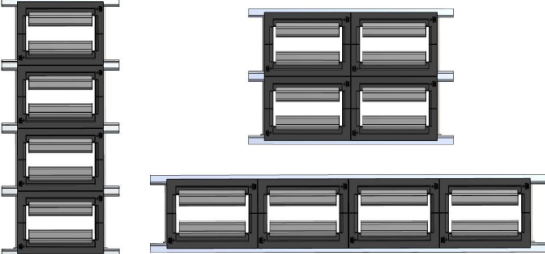
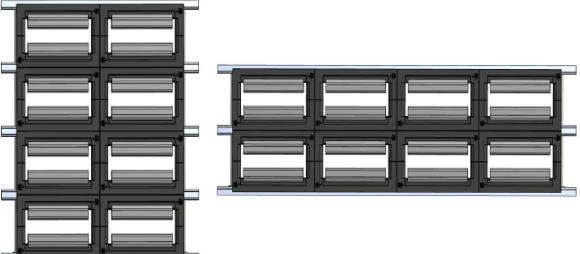


INSTRUCTION SHEET

NVENT ERIFLEX FLEXBUS SUPPORTS AND BRACING SYSTEM

FLEXCOND50 / FLEXCOND100

| Configuration | On Edge Support Kit | |
|---------------|---|--|
| | 1 Conductor per Phase  | 2 Conductors per Phase  |
| 3P |  |  |
| 3P+N |  |  |

| Configuration | Flat Support Kit | |
|---------------|--|---|
| | 1 Conductor per Phase  | 2 Conductors per Phase  |
| 3P |  |  |
| 3P+N |  |  |

WARNING:

1. nVent products shall be installed and used only as indicated in nVent product instruction sheets and training materials. Instruction sheets are available at www.nVent.com and from your nVent customer service representative.
2. nVent products must never be used for a purpose other than the purpose for which they were designed or in a manner that exceeds specified load ratings.
3. All instructions must be **completely** followed to ensure proper and safe installation and performance.
4. Improper installation, misuse, misapplication or other failure to completely follow nVent's instructions and warnings may cause product malfunction, property damage, serious bodily injury and/or death, and void your warranty.

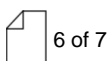
SAFETY INSTRUCTIONS: All governing codes and regulations and those required by the job site must be observed. Always use appropriate safety equipment such as eye protection, hard hat, and gloves as appropriate to the application.

nVent, nVent CADDY, nVent ERICO Cadweld, nVent ERICO Critec, nVent ERICO, nVent ERIFLEX, and nVent LENTON are owned by nVent or its global affiliates. All other trademarks are the property of their respective owners. nVent reserves the right to change specifications without prior notice.



TECHNICAL SUPPORT:
www.nVent.com

IP8610_C



©2021-2022 nVent All Rights Reserved



INSTRUCTION SHEET

NVENT ERIFLEX FLEXBUS SUPPORTS AND BRACING SYSTEM

FLEXCOND50 / FLEXCOND100

| CONFIGURATION | | FLEXCOND50 | | | | | | | FLEXCOND100 | | | | | | |
|---------------|--|------------|------|------|------|-----|------|-------|-------------|------|------|-------|-----|------|-------|
| | | L1 | # L1 | E1 | S | Lr | # Lr | D | L1 | # L1 | E1 | S | Lr | # Lr | D |
| 3P (I) | | 287,5 | 3 | 12,5 | 87,5 | 160 | 4 | 262,5 | 325 | 3 | 12,5 | 100 | 195 | 4 | 300 |
| | | 112,5 | 7 | 12,5 | 87,5 | 435 | 2 | 87,5 | 162,5 | 7 | 12,5 | 137,5 | 195 | 2 | 137,5 |
| | | 287,5 | 3 | 12,5 | 87,5 | 160 | 4 | 262,5 | 437,5 | 3 | 12,5 | 137,5 | 300 | 4 | 412,5 |
| 3P (II) | | 550 | 3 | 12,5 | 87,5 | 160 | 7 | 525 | 625 | 3 | 12,5 | 100 | 195 | 7 | 600 |
| | | 287,5 | 5 | 12,5 | 87,5 | 255 | 4 | 262,5 | 325 | 5 | 12,5 | 100 | 360 | 4 | 300 |
| | | 200 | 7 | 12,5 | 87,5 | 435 | 3 | 175 | 300 | 7 | 12,5 | 137,5 | 435 | 3 | 275 |
| | | 287,5 | 5 | 12,5 | 87,5 | 300 | 4 | 262,5 | 437,5 | 5 | 12,5 | 137,5 | 300 | 4 | 412,5 |
| 3P + N (I) | | 375 | 3 | 12,5 | 87,5 | 160 | 5 | 350 | 425 | 3 | 12,5 | 100 | 195 | 5 | 400 |
| | | 200 | 5 | 12,5 | 87,5 | 255 | 3 | 175 | 225 | 5 | 12,5 | 100 | 360 | 3 | 200 |
| | | 200 | 5 | 12,5 | 87,5 | 300 | 3 | 175 | 300 | 5 | 12,5 | 137,5 | 300 | 3 | 275 |
| | | 112,5 | 9 | 12,5 | 87,5 | 570 | 2 | 87,5 | 162,5 | 9 | 12,5 | 137,5 | 570 | 2 | 137,5 |
| | | 375 | 3 | 12,5 | 87,5 | 160 | 3 | 350 | 575 | 3 | 12,5 | 137,5 | 195 | 3 | 550 |
| 3P + N (II) | | 725 | 3 | 12,5 | 87,5 | 160 | 9 | 700 | 825 | 3 | 12,5 | 100 | 195 | 9 | 800 |
| | | 375 | 5 | 12,5 | 87,5 | 255 | 5 | 350 | 425 | 5 | 12,5 | 100 | 360 | 5 | 400 |
| | | 200 | 9 | 12,5 | 87,5 | 570 | 3 | 175 | 300 | 9 | 12,5 | 137,5 | 570 | 3 | 275 |
| | | 375 | 5 | 12,5 | 87,5 | 300 | 5 | 350 | 575 | 5 | 12,5 | 137,5 | 300 | 5 | 550 |

WARNING:

- nVent products shall be installed and used only as indicated in nVent product instruction sheets and training materials. Instruction sheets are available at www.nVent.com and from your nVent customer service representative.
- nVent products must never be used for a purpose other than the purpose for which they were designed or in a manner that exceeds specified load ratings.
- All instructions must be **completely** followed to ensure proper and safe installation and performance.
- Improper installation, misuse, misapplication or other failure to completely follow nVent's instructions and warnings may cause product malfunction, property damage, serious bodily injury and/or death, and void your warranty.

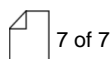
SAFETY INSTRUCTIONS: All governing codes and regulations and those required by the job site must be observed. Always use appropriate safety equipment such as eye protection, hard hat, and gloves as appropriate to the application.

nVent, nVent CADDY, nVent ERICO Cadweld, nVent ERICO Critec, nVent ERICO, nVent ERIFLEX, and nVent LENTON are owned by nVent or its global affiliates. All other trademarks are the property of their respective owners. nVent reserves the right to change specifications without prior notice.



TECHNICAL SUPPORT:
www.nVent.com

IP8610_C



©2021-2022 nVent All Rights Reserved

